



# RealWear Navigator<sup>®</sup> 520. The best in industrial wearables just got better.

With a 20% larger view than RealWear Navigator 500, RealWear Navigator 520 is the gold standard in rugged frontline solutions.



## Built for productivity, designed for safety.



### Full-Shift, Hands-Free Use

Work comfortably all day and easily hot-swap your battery without losing a minute on the job.



### Revolutionary Modular Design

Enables on-the-job agility and adaptability to support even more use cases.



### Enhanced Remote Collaboration

Improves productivity, saves travel costs and reduces equipment downtime.



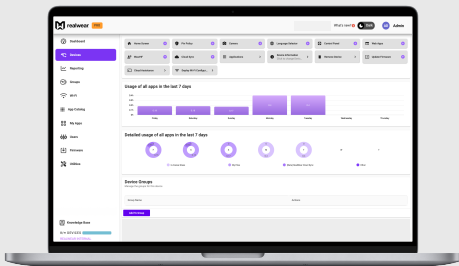
### Secure sign-on and enterprise deployment

Reduces time and friction to get devices up and running, deployed and managed securely.

## 12 months Service and Support Pack now included.

### Manage devices with RealWear Cloud Pro

In addition to basic analytics, device management and the app catalog, Cloud Pro offers, advanced analytics, remote firmware management, Cloud Assistance, data export, lost device, wipe device, and more.



### Resolve issues quickly with technical support

Our technical experts are available to answer your questions 24 hours per day during the business week. Log your issue via phone, email or chat, and our team will respond within four hours.

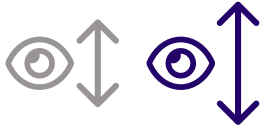


### Repair devices or arrange an advanced replacement

We know that uptime is critical for your frontline. In the rare cases of device failure, RealWear will send a replacement device in advance of receiving the old one.



# Bigger. Sharper. Bolder.



## Enjoy enhanced usability

With longer eye relief, you can position the display farther from your eye to see the screen more easily.



## See more detail

Sharper resolution from a larger, high definition display provides enhanced, crystal clear detail.



## Get a new perspective

With a wider FOV and larger viewfinder, you can more easily find the perfect viewing angle.

### RealWear Navigator 500

WVGA (854x480)

20°

20mm

8x5mm

0.32"

**Resolution**

**Field of View**

**Eye Relief**

**Eye Box**

**Display Size**

### RealWear Navigator 520

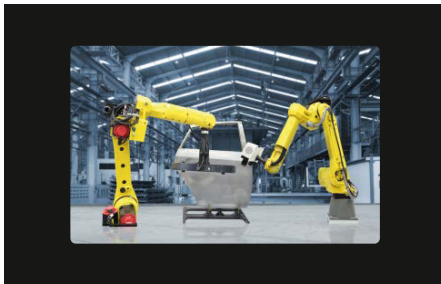
HD (1280x720)

24°

30mm

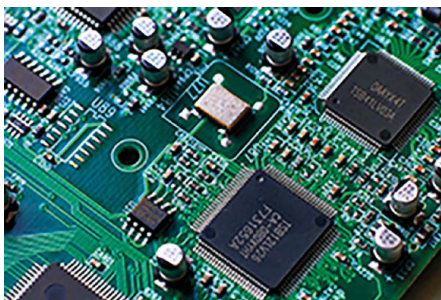
14x14mm

0.35"



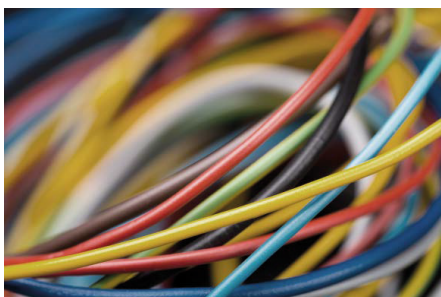
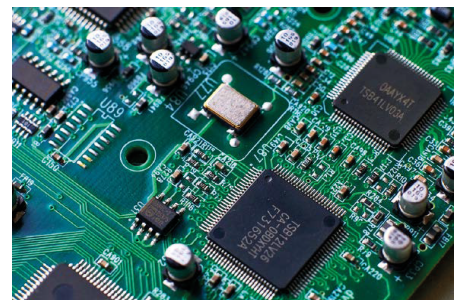
## Bigger

Having a bigger screen while maintaining awareness is the best of both worlds.



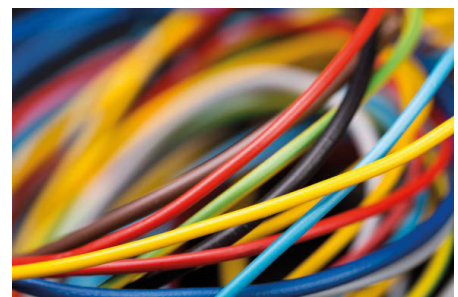
## Sharper

Higher resolution allows the user to see content with more detail.



## Bolder

The 520 display offers even better fidelity for more accurate color representation.



Comparison for illustrative purposes. Actual experience may vary.

# Specifications

General	
Operating System	Android 11 (AOSP) + WearHF™ hands-free interface + Enterprise features
Chipset	2.0 GHz 8-core Qualcomm® Snapdragon™ 662 with Adreno 610 GPU - OpenGL® ES 3.2 & OpenCL™ 2.0
Memory	64GB internal storage / 4GB RAM / MicroSD slot (max card supported 512GB)
Weight	9.7oz/274g
Ruggedization	IP66, MIL-STD-810H, 6.5 feet / 2-meter drop
Dedicated Buttons	Power button (with integrated fingerprint sensor), Programmable: action button, left button, right button
Ports	1/8" / 3.5mm audio, 1 USB Type-C
Boom Arm	Adjusts six ways for most head sizes, left or right eye compatible, display can be moved out of way when not in use
Operating Temperature, Humidity	-4°F to +122°F / -20°C to +50°C, 5% to 95% relative humidity (non-condensing)
Included Applications	Document Navigator, Camera with Barcode Reader, Audio Recorder, Video Recorder, Webpage Viewer, Cloud Sync, Media Player, Calculator, Pedometer, Timer
Languages & Dialects Supported	Chinese (Cantonese, Mandarin-Simplified and Traditional), Czech, Dutch, English (American, Australian, British), French, German, Indonesian, Italian, Japanese, Korean, Polish, Portuguese, Russian, Spanish, Thai
Sign-in Options	Companion App, Voice Keyboard with secure mode
Connectivity & Sensors	
Bluetooth	Bluetooth®5.1
Wi-Fi	802.11 a/b/g/n/ac - 2.4 GHz and 5GHz
GPS and Location	<ul style="list-style-type: none"><li>• GPS, Glonass, BeiDou, Galileo, QZSS, and SBAS</li><li>• NavIC support</li><li>• Dual-Frequency GNSS (L1 + L5)</li><li>• Qualcomm® Sensor-Assisted Positioning</li></ul>
IMU - Head Movement Tracking	3 IMUs (including 3-axis accelerometers, gyroscopes, eCompass)
Battery	
Capacity	2,600 mAh / 10.0 Wh Li-polymer, rechargeable, hot-swappable
Security	
Security	Qualcomm® Trusted Execution Environment, Crypto Engine, Secure Boot
Display	
Type	24° field-of-view, 24-bit color LCD, 0.35-inch diagonal, outdoor visible
Resolution	HD (1280X720)
Audio	
Microphone	4 digital microphones with active noise cancellation Accurate voice recognition in noise up to 100 dBA
Speaker	Internal 94 dBA loudspeaker
Camera	
Image	48 MP Sensor, PDAF with LED flashlight
Video	Up to 1080p @ 60fps, >6X zoom in HD, video stabilization. codecs: VP8, VP9, H.264, H.265 HEVC
Compatibility	
PPE	Works with many hard hats, protective eyewear, masks and more
Warranty	
Warranty	Now including 12 months of Service and Support Pack
Extended Service & Support Plans	Available
Accessories	
Included	Workband, USB Type-C charging cable
Cloud services	
RealWear Cloud	Accelerates centralized deployment and management of devices